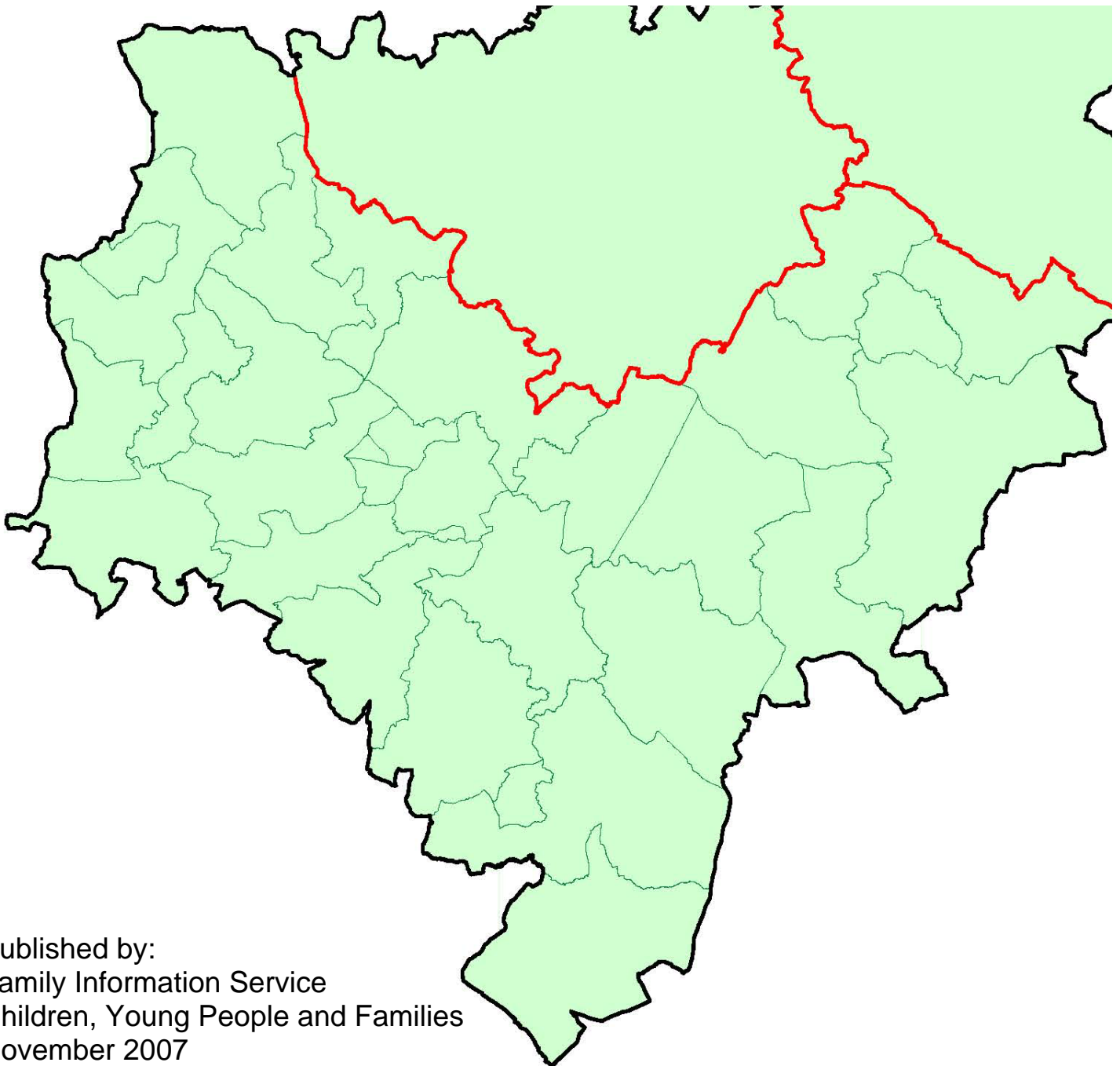


Stratford District Sufficiency Assessment 2007/08

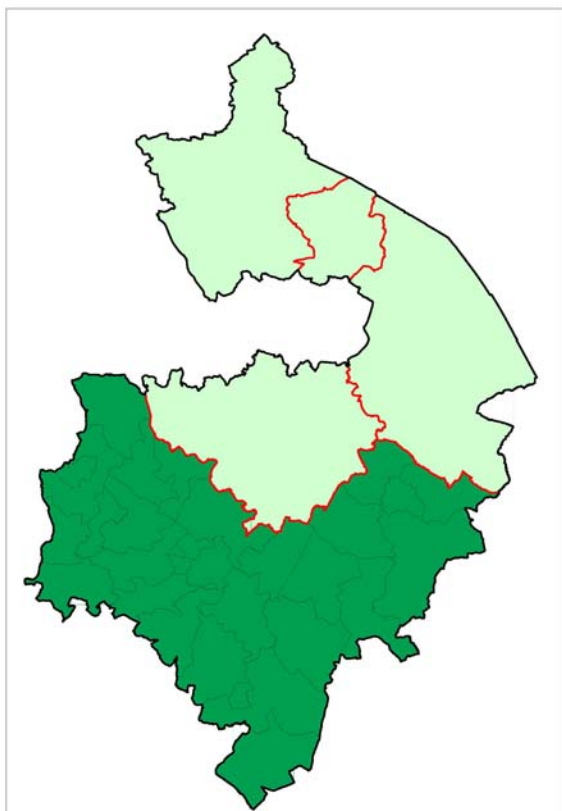


Published by:
Family Information Service
Children, Young People and Families
November 2007

Table of contents

	Page Number
Introduction	3
Availability of childcare	5
Demand for childcare	9
Affordability of childcare	13
Ward profiles	
Alcester	16
Aston Cantlow	17
Bardon	18
Bidford and Salford	19
Brailes	20
Burton Dassett	21
Claverdon	22
Ettington	23
Fenny Compton	24
Harbury	25
Henley	26
Kineton	27
Kinwarton	28
Long Compton	29
Long Itchington	30
Quinton	31
Sambourne	32
Shipston	33
Snitterfield	34
Southam	35
Stockton and Napton	36
Stratford Alveston	37
Stratford Avenue and New Town	38
Stratford Guild and Hathaway	39
Stratford Mount Pleasant	40
Studley	41
Tanworth	42
Tredington	43
Vale of the Red Horse	44
Welford	45
Wellesbourne	46
Appendices	
Appendix A: Maps showing distribution of children by age group	47
Appendix B: Map showing location of childcare by type	48
Appendix C: Parent's survey responses on access to childcare	49
Appendix D: Average cost of childcare in Stratford district	50
Appendix E: Breakdown of children with a statement of special educational needs by type of need	51
Appendix F: Glossary of abbreviations	52

Stratford District Sufficiency Assessment



Introduction

Stratford District covers an area of 377 square miles, and is made up of 31 wards. It is the largest geographical district, covering almost half of the county.

It has a population of 119,000 (mid 2005 estimate) and has the lowest population density in Warwickshire.

Stratford district is predominantly rural in nature, with low levels of deprivation.

Children in Stratford District

3545 children aged 0-2
2455 children aged 3-4
3876 children aged 5-7
4199 children aged 8-10
5776 children aged 11-14
4385 children aged 15-17

Total 24,236 under 18
(Warks PCT, July 07)

Maps showing the distribution of children by age group across the district are shown in Appendix A.

In 2005 approximately 3745¹ children were known to be living in lone parent families, accounting for around 25% of all children.

399 school age children have statements of special educational needs (SEN). 75% of these are male (ASRS, June 07). Children with a statement of special educational needs account for 2.2% of the school age population. A breakdown by type of need can be found in Appendix E.

67 children are currently 'looked after' by the local authority.

¹ Figure rounded to the nearest 5 at super output area level

Parents in Stratford District

The best measure of the number of families in the district is by claims for child benefit. In Aug 2005 13,320 families were claiming child benefit. 8415 of these families are claiming child tax credit on behalf of 14,925 children. This gives an average ratio of 1.8 children per family.

Across the district there are currently 31 teenage mothers (Connexions, Mar 07). No single ward has a large number of teenage parents. Teenage parents are more likely than others to find difficulties in accessing information to help with their parenting role.

There were 1196 benefit claimants¹ with dependent children in April 06. This affects around 930 children aged 0-4 and 1571 children aged 5-17 (Job Centre Plus, April 06).

216 parents and carers had responded to the parents survey² by June 07. A breakdown of their responses regarding their use and access to childcare can be found in Appendix C.

Further Information

If you have any comments about this report, or questions about the information within it, please contact:

Elaine Coates
Family Information Service
Saltisford Office Park
Ansell Way
Warwick
CV34 4UL
Tel: 01926 742209
Email: elainecoates@warwickshire.gov.uk

¹ Benefit claimants include those claiming job seekers allowance, income support, incapacity benefit and severe disablement allowance.

² The Family Information Service Parents Survey launched in Jan 07 to collect parents' views on access to childcare and other family support services. For further information please contact the Family Information Service.

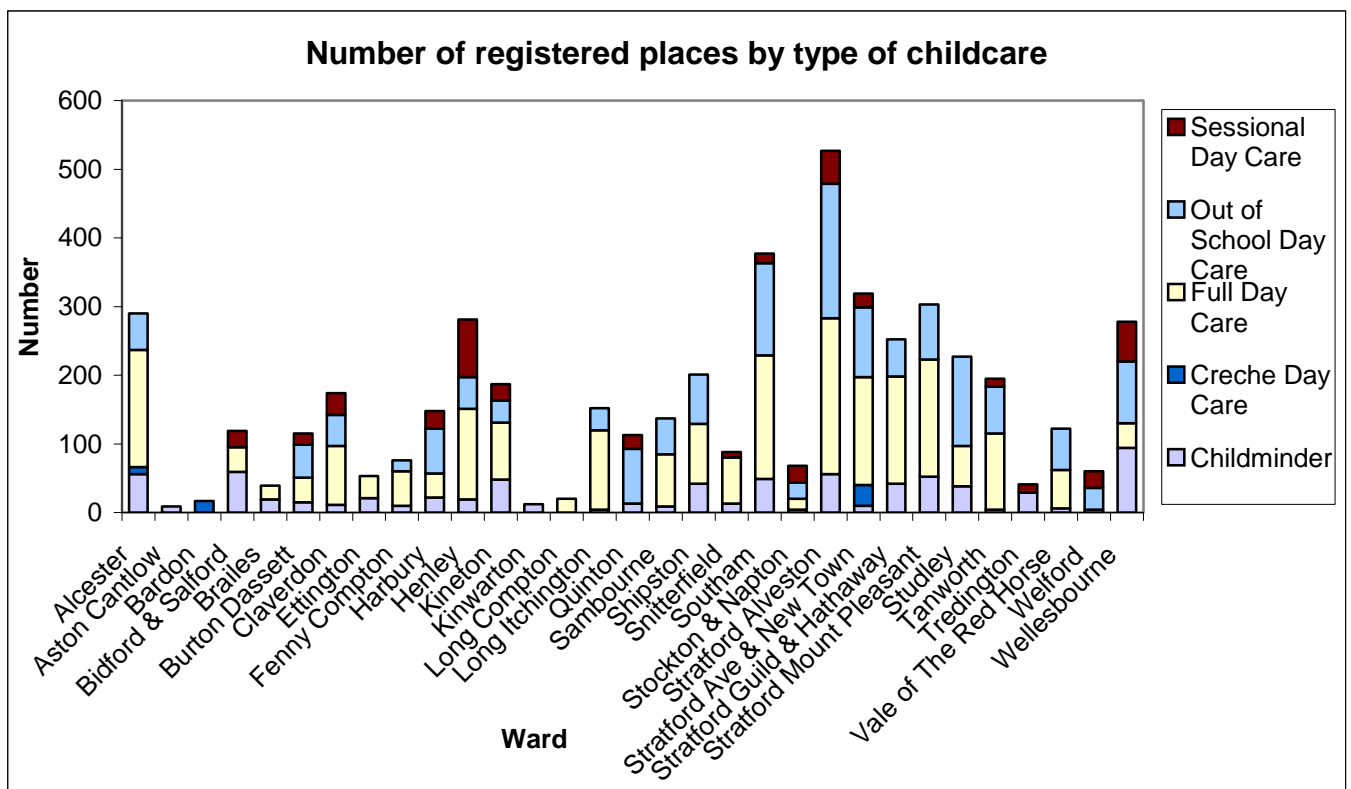
Availability of childcare

Altogether there are 294 registered childcare providers in the Stratford District. 164 of these are childminders, 56 offer full day care, 52 out of school care, 19 sessional care and 3 are crèches.

71 providers are registered to provide nursery education grant (NEG) sessions. All wards except for Aston Cantlow, Bardon and Kinwarton have at least one provider of NEG sessions.

The level of provision varies considerably between each ward in terms of the number of providers and places available.

The graph below shows the number of places and type of care on offer on a ward-by-ward basis.



Stratford Alveston has the highest level of provision overall. Stratford Avenue and New Town is the only ward to have all five types of childcare available.

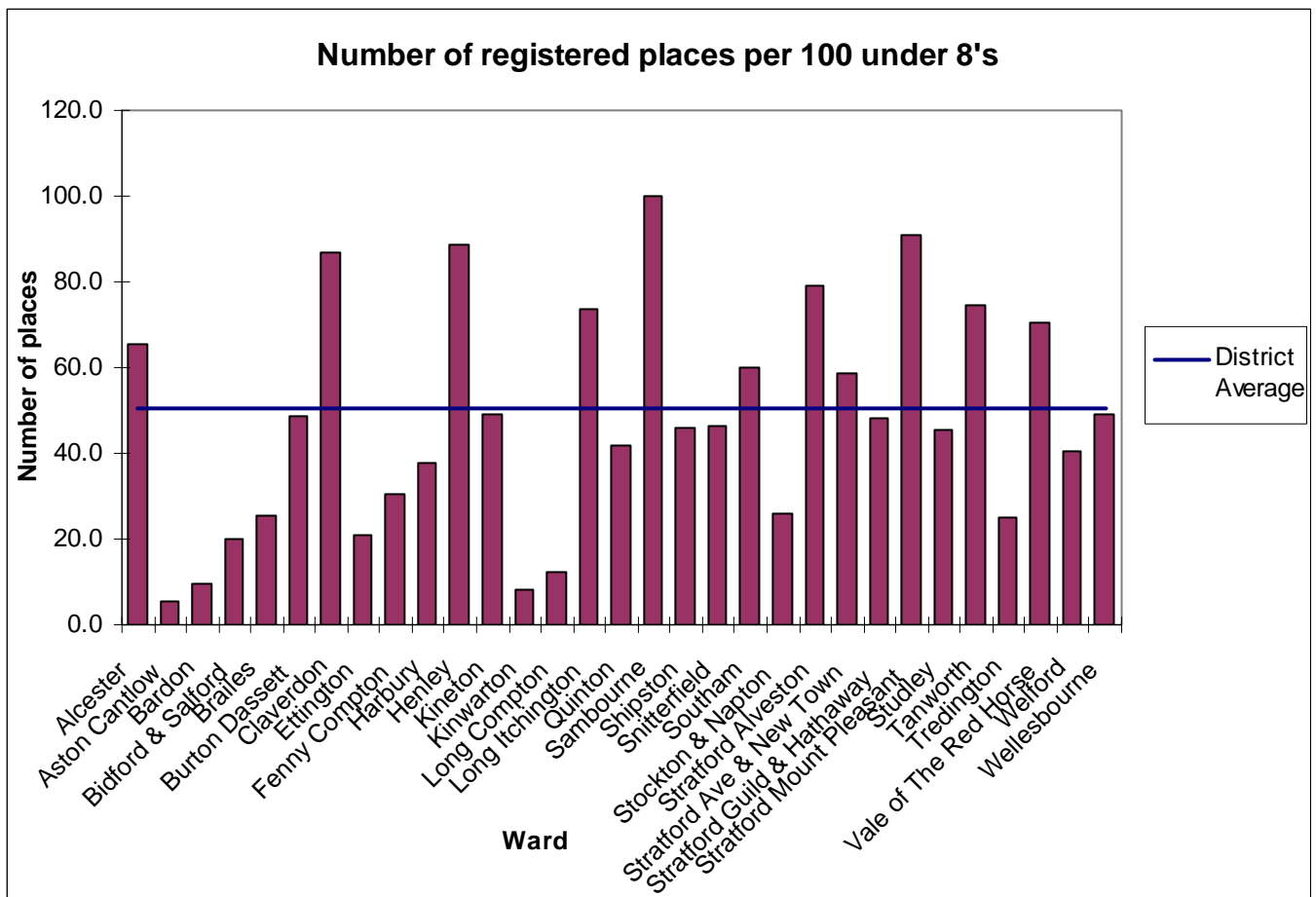
The lowest levels of provision are in Aston Cantlow, Bardon, Kinwarton and Long Compton – all of which have only one type of provision available. In Bardon the only type of care available is crèche day care. The limited provision in these wards may have implications for parental choice.

The following table shows the breakdown of registered places by type of care.

Ward	No. Under 8's	No. places per 100 under 8's	Childminder	Creche Day Care	Full Day Care	Out of School Day Care	Sessional Day Care	Grand Total
Alcester	444	65.3	56	10	171	53		290
Aston Cantlow	160	5.6	9					9
Bardon	181	9.4		17				17
Bidford & Salford	597	19.9	59		36		24	119
Brailes	154	25.3	19		20			39
Burton Dassett	236	48.7	15		36	48	16	115
Claverdon	200	87.0	11		86	45	32	174
Ettington	251	21.1	21		32			53
Fenny Compton	251	30.3	10		50	16		76
Harbury	394	37.6	22		35	65	26	148
Henley	317	88.6	19		132	46	84	281
Kineton	381	49.1	48		83	32	24	187
Kinwarton	143	8.4	12					12
Long Compton	165	12.1			20			20
Long Itchington	207	73.4	4		116	32		152
Quinton	271	41.7	13			80	20	113
Sambourne	137	100.0	9		76	52		137
Shipston	436	46.1	42		87	72		201
Snitterfield	189	46.6	13		67		8	88
Southam	629	59.9	49		180	134	14	377
Stockton & Napton	261	26.1	4		16	24	24	68
Stratford Alveston	665	79.2	56		227	196	48	527
Stratford Ave & New Town	542	58.9	10	30	157	102	20	319
Stratford Guild & Hathaway	524	48.1	42		156	54		252
Stratford Mount Pleasant	333	91.0	52		171	80		303
Studley	498	45.6	38		59	130		227
Tanworth	261	74.7	4		111	68	12	195
Tredington	163	25.2	29				12	41
Vale of The Red Horse	173	70.5	6		56	60		122
Welford	149	40.3	4			32	24	60
Wellesbourne	564	49.3	94		36	90	58	278
Total Sum of Places	9876	50.6	770	57	2216	1511	446	5000

The number of children in each ward varies, and therefore the overall number of childcare places does not necessarily give the best picture of the level of provision. The least number of children under 8 is found in Sambourne ward, with an under 8 population of 137; the highest number of under 8's can be found in Stratford Alveston at 665.

The following graph shows the level of registered provision per 100 children under 8, including the average provision for the district.



Clearly there are significant differences between the levels of provision in different wards. Sambourne has the highest level of provision compared to the number of children, and has the same numbers of places as children under 8. By contrast Aston Cantlow has the lowest level of provision, with roughly one place for every 18 children.

Across the district there is roughly one place for every 2 children.

A map showing the location of childcare providers within the district is shown in Appendix B.

In addition to the registered provision there are 7 maintained nursery schools/classes.

Unregistered childcare

Across the district there are 9 known providers offering unregistered childcare; 3 holiday schemes/activities, 2 nursery units of independent schools and 4 out of school clubs.

All of the out of school clubs are for primary school aged children, and are based on a school site.

One holiday scheme is for primary school aged children, one for children aged 10-13 and one for all ages.

Opening hours

The times that settings open and close, and the length of the sessions, impacts on whether working parents are able to access childcare.

Most commonly settings open at 8am, although some providers are flexible. The earliest time childcare is available anywhere in the district is 6.00am. The majority of settings close between 5.30pm and 6pm, with the latest available childcare finishing at 7pm. Around 51% of providers are open for 10 hours or more per day.

Sessional care and crèches typically open later and close earlier than full day care and childminders, reflecting the shorter periods of care on offer. There are a number of holiday schemes in this district offering full day care.

9 providers are able to offer care during the weekends and 3 childminders are able to offer overnight care.

Flexibility is limited within all types of care except for childminders.

Children with additional needs

In Warwickshire children with additional needs are generally supported to attend mainstream childcare settings rather than accessing separate provision. Wherever possible providers are assisted to meet the needs of the individual child as part of their daily activity.

In the Stratford District 187 settings are willing to provide care for children with additional needs.

In addition 128 settings have confirmed wheelchair access. These are spread across 27 wards.

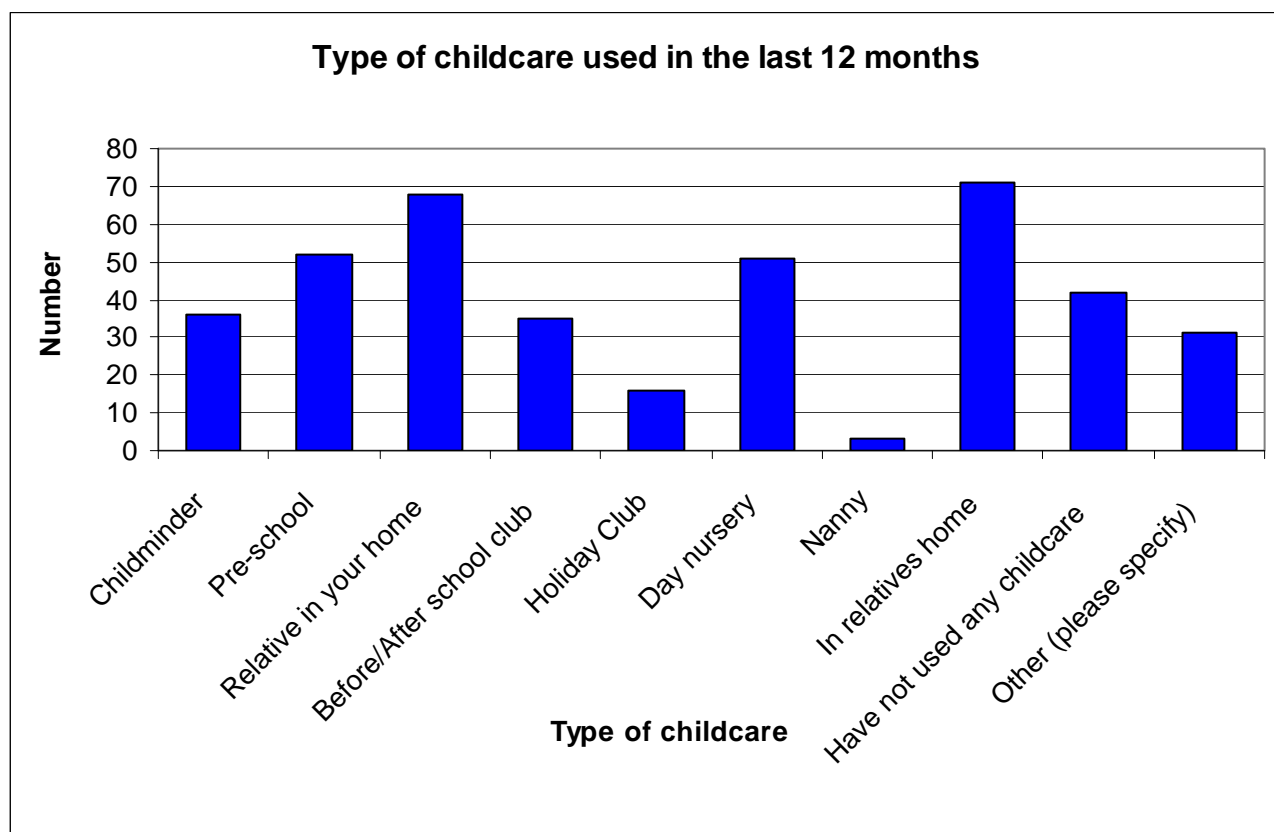
Where a child needs additional support within a setting, extra funding can be provided for this. During the second quarter of the year (July to Sept 07) the Integrated Disability Service funded 5 childcare placements in the Stratford District for children with additional needs.

Due to the support of children with additional needs within other settings, targeted schemes are more limited. There is one maintained assessment nursery in this district, which is attached to Welcombe Hills Special School.

Demand for childcare

19% of the parents survey¹ respondents stated that they had not used any childcare in the last 12 months. This is comparable to other districts.

Informal care in a relative's home, and informal care by a relative in the child's own home were the most commonly used types of childcare. The graph below shows the number of respondents who had used each type of care in the last year.



58% of respondents stated that they used childcare on a regular basis.

Take up of free nursery education places

1047 three year olds were receiving at least one nursery education grant session in January 2007 (Early Years Census, Jan 07)

Additionally, 211 children had places in a maintained nursery school/class. A further 21 children were listed in an assessment nursery. (Spring School Census, Jan 07)

This compares to 1240 3 year olds, giving a take up rate of around 103%. The take up rate implies that children from outside of Warwickshire are accessing nursery education grant sessions within the district.

¹ The Family Information Service Parents Survey launched in Jan 07 to collect parents views on access to childcare and other family support services. For further information please contact the Family Information Service.

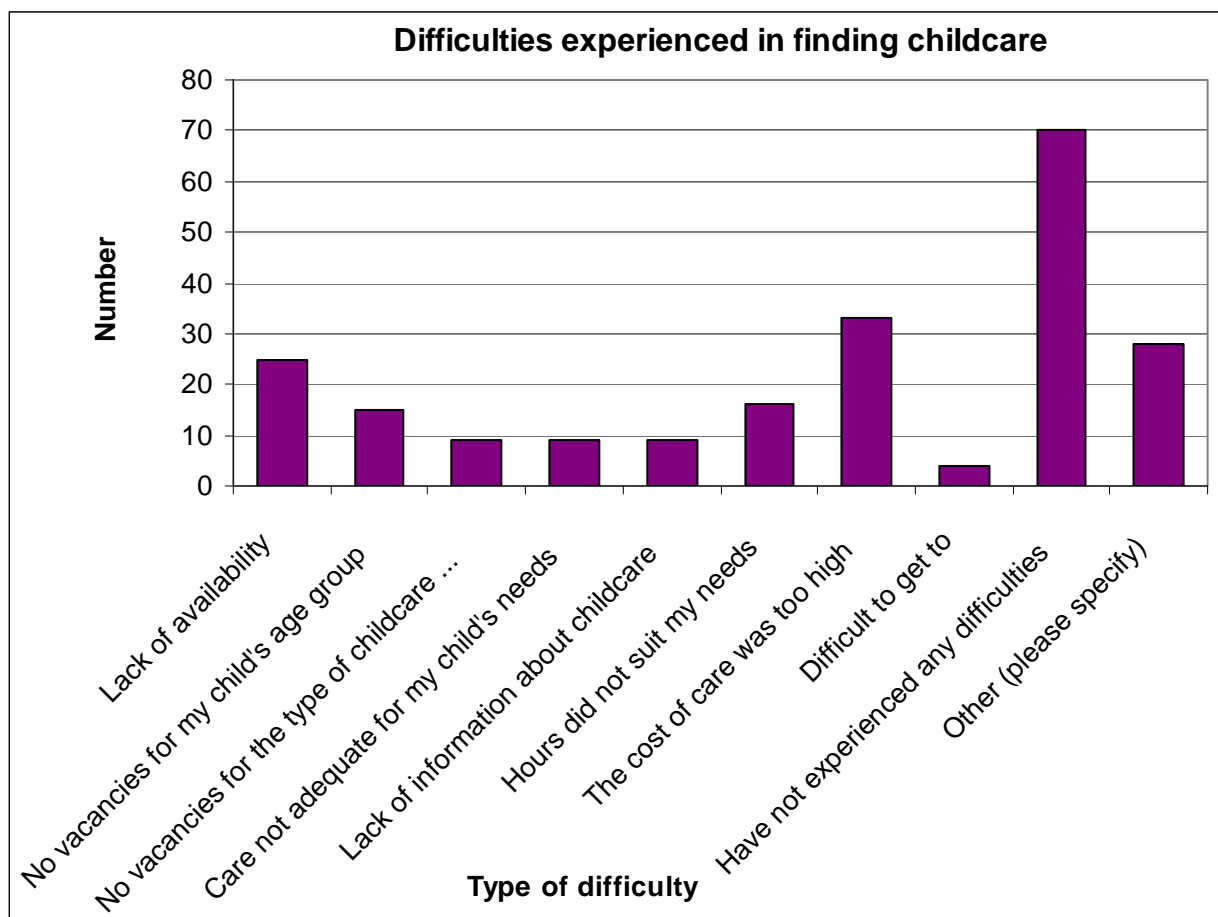
Only 465 four year olds were receiving nursery grant sessions compared to a population of 1215, however the majority of four year olds are already in school reception classes so this does not accurately reflect take up rates.

Among children entering reception classes in Autumn 2006 there were 3 reported instances of prohibitive cost restricting the use of pre-school facilities. These all attended a school in Stratford town. (Gap Survey, Feb 07).

Difficulties experienced finding childcare

32% of respondents to the parents survey have not experienced any difficulties in finding childcare. A further 34% have either not tried to find childcare or did not respond to the question.

The following graph shows the responses given to the survey regarding difficulties faced in the last 12 months.



The most commonly cited difficulty faced by parents in finding childcare is cost, which 15% of respondents to the parents survey stated had been a factor in the last year.

6% of respondents said they were unable to access information on looking for childcare; however only 4% gave this as a reason for having difficulties in the last year. This is comparable to other districts.

A breakdown of responses given on the use and access to childcare can be found in Appendix C.

Future demand

The number of live births in this district has been quite unsettled over the last few years, and it is not clear at present if the number of births is likely to increase or decrease. Projections suggest that a slight increase in the number of young children will be seen over the next few years.

Projected new housing is likely to increase demand for childcare only within the Stratford town area. Other parts of the district are not anticipated to have significant additional children due to new housing.

Affordability of childcare

Families with children can claim tax credits in addition to child benefit to help with the costs of raising a family. Child tax credit can be claimed by the majority of working families, and is included in benefit payments for non-working families. All families with an income below £50,000 are entitled to at least the family element, worth £545 a year.

Working tax credit can only be claimed by individuals working more than 16 hours a week, or couples working a combined total of 30 hours per week. It is directed at low income workers (generally under £15,000), to make working a more viable option.

Working tax credit includes an element specifically related to childcare, with eligible parents able to claim up to 80% of the cost of using registered childcare.

The maximum amount that can be claimed is £140 per week for families with one child (80% of £175), and £240 per week for families with two or more children (80% of £300). This is in addition to any other entitlement to working tax credit.

Working Tax Credit and Child Tax Credit

1920 families are claiming both child tax credit and working tax credit. Where both tax credits are claimed, families are receiving an additional £121.29 per week on average (£525.58 per month).

550 families are claiming the childcare element of working tax credit. Around two thirds of these are lone parents. On average the childcare element provides an additional £46.90 per week. This compares to an average weekly cost of a Southam day nursery at £158.30, or a childminder at £149.50. A breakdown of costs in key towns in the Stratford district can be found in Appendix D.

Childcare vouchers

Another option offered by some employers is childcare vouchers. Childcare vouchers are free from national insurance contributions, and the first £55 per week is also free from tax.

Childcare vouchers affect eligibility for tax credits, and therefore these are not the best option for all parents. In general terms a family will be better off claiming childcare vouchers in the following circumstances:

- If their childcare costs exceed £175 per week for one child, or £300 per week for two or more children
- If they are receiving the family element of child tax credit or less (£10.48 per week, or £20.96 per week if they have a baby under 1), and are claiming childcare costs.



Ward Profiles

Alcester



Super Output Area	IMD score	Warwickshire Rank*
Alcester South, Arrow & Weethley	5.76	285
Abbey, Grammar & Kings Coughton	5.13	298
Alcester North & Conway	19.39	86
Alcester East & Island	15.6	123

*1=most deprived, 333=least deprived

(OPDM, 2004)

Profile:

158 children aged 0-2
 96 children aged 3-4
 190 children aged 5-7
 236 children aged 8-10
 341 children aged 11-14
 275 children aged 15-17
 (Warks PCT, July 07)

There are 720 families claiming child benefit, and of these 565 are claiming child tax credit.

105 families are claiming out of work benefits, affecting 180 children.

295 children are known to be in lone parent families, around 44% of which are in households claiming out of work benefits.

(HMRC, Aug 05)¹

2.9% of statutory school age pupils that live in this ward and attend Warwickshire maintained schools are from BME communities². Of these, the largest minority ethnic group is Any Other Mixed Background.

Childcare Provision

	Childminder	Creche Day Care	Full Day Care	Out of School Day Care	Sessional Day Care	Grand Total
Providers	12	1	4	2		19
Places	56	10	171	53		290
Vacancies	16		26	10		52
% Vacant	29%	0%	15%	19%		18%

Number of places per 100 under 8's = 65.3

3 settings are currently registered to provide nursery education grant sessions.

Additionally there is an unregistered holiday activity for children aged 10 to 13.

¹ All figures from HMRC are rounded to the nearest 5 at super out area level

² BME includes all ethnic groups except for White British, White Irish, Information Not Yet Obtained and Refused. Based on Spring School Census Jan 07

Aston Cantlow



Super Output Area	IMD score	Warwickshire Rank*
Aston Cantlow	10.54	196

*1=most deprived, 333=least deprived

(OPDM, 2004)

Profile:

67 children aged 0-2
 32 children aged 3-4
 61 children aged 5-7
 62 children aged 8-10
 90 children aged 11-14
 58 children aged 15-17
 (Warks PCT, July 07)

There are 200 families claiming child benefit, and of these 105 are claiming child tax credit.

25 families are claiming out of work benefits, affecting 45 children.

50 children are known to be in lone parent families, around 60% of which are in households claiming out of work benefits.
 (HMRC, Aug 05)¹

3.2% of statutory school age pupils that live in this ward and attend Warwickshire maintained schools are from BME communities². Of these, the largest minority ethnic group is Any Other White Background.

Childcare Provision

	Childminder	Creche Day Care	Full Day Care	Out of School Day Care	Sessional Day Care	Grand Total
Providers	2					2
Places	9					9
Vacancies	2					2
% Vacant	22%					22%

Number of places per 100 under 8's = 5.6

0 settings are currently registered to provide nursery education grant sessions.

¹ All figures from HMRC are rounded to the nearest 5 at super out area level

² BME includes all ethnic groups except for White British, White Irish, Information Not Yet Obtained and Refused. Based on Spring School Census Jan 07

Bardon



Super Output Area	IMD score	Warwickshire Rank*
Bardon	10.38	197

*1=most deprived, 333=least deprived

(OPDM, 2004)

Profile:

54 children aged 0-2
 51 children aged 3-4
 76 children aged 5-7
 69 children aged 8-10
 113 children aged 11-14
 79 children aged 15-17
 (Warks PCT, July 07)

There are 215 families claiming child benefit, and of these 120 are claiming child tax credit.

25 families are claiming out of work benefits, affecting 45 children.

50 children are known to be in lone parent families, around 40% of which are in households claiming out of work benefits.
 (HMRC, Aug 05)¹

6.6% of statutory school age pupils that live in this ward and attend Warwickshire maintained schools are from BME communities². Of these, the largest minority ethnic group is Any Other White Background.

Childcare Provision

	Childminder	Creche Day Care	Full Day Care	Out of School Day Care	Sessional Day Care	Grand Total
Providers		1				1
Places		17				17
Vacancies						
% Vacant		0%				0%

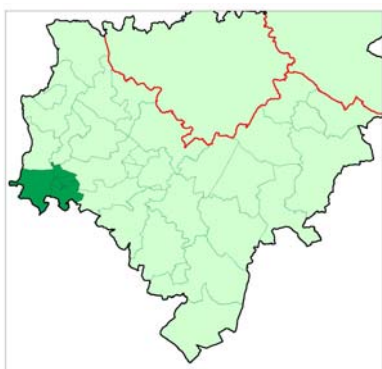
Number of places per 100 under 8's = 9.4

0 settings are currently registered to provide nursery education grant sessions.

¹ All figures from HMRC are rounded to the nearest 5 at super out area level

² BME includes all ethnic groups except for White British, White Irish, Information Not Yet Obtained and Refused. Based on Spring School Census Jan 07

Bidford and Salford



Super Output Area	IMD score	Warwickshire Rank*
Dunnington and Salford Priors	13.98	138
Bidford East, Waterloo & Broom	17.38	105
Bidford West and Wixford	5.88	280
Bidford South, Marcliff and Barton	4.28	312

*1=most deprived, 333=least deprived (OPDM, 2004)

Profile:

211 children aged 0-2
 165 children aged 3-4
 221 children aged 5-7
 265 children aged 8-10
 359 children aged 11-14
 254 children aged 15-17
 (Warks PCT, July 07)

There are 860 families claiming child benefit, and of these 610 are claiming child tax credit.

95 families are claiming out of work benefits, affecting 190 children.

275 children are known to be in lone parent families, around 47% of which are in households claiming out of work benefits.
 (HMRC, Aug 05)¹

4.4% of statutory school age pupils that live in this ward and attend Warwickshire maintained schools are from BME communities². Of these, the largest minority ethnic group is Any Other White Background.

Childcare Provision

	Childminder	Creche Day Care	Full Day Care	Out of School Day Care	Sessional Day Care	Grand Total
Providers	12		2		1	15
Places	59		36		24	119
Vacancies	9		2			11
% Vacant	15%		6%		0%	9%

Number of places per 100 under 8's = 19.9

2 settings are currently registered to provide nursery education grant sessions.

¹ All figures from HMRC are rounded to the nearest 5 at super out area level

² BME includes all ethnic groups except for White British, White Irish, Information Not Yet Obtained and Refused. Based on Spring School Census Jan 07

Brailes



Super Output Area	IMD score	Warwickshire Rank*
Brailes	8.67	234

*1=most deprived, 333=least deprived

(OPDM, 2004)

Profile:

51 children aged 0-2
 36 children aged 3-4
 67 children aged 5-7
 73 children aged 8-10
 101 children aged 11-14
 65 children aged 15-17
 (Warks PCT, July 07)

There are 225 families claiming child benefit, and of these 125 are claiming child tax credit.

20 families are claiming out of work benefits, affecting 40 children.

20 children are known to be in lone parent families, around half of which are in households claiming out of work benefits.
 (HMRC, Aug 05)¹

3.2% of statutory school age pupils that live in this ward and attend Warwickshire maintained schools are from BME communities². Of these, the largest minority ethnic groups are Any Other Mixed Background and White and Asian.

Childcare Provision

	Childminder	Creche Day Care	Full Day Care	Out of School Day Care	Sessional Day Care	Grand Total
Providers	4		1			5
Places	19		20			39
Vacancies	2		3			5
% Vacant	11%		15%			13%

Number of places per 100 under 8's = 25.3

1 setting is currently registered to provide nursery education grant sessions.

¹ All figures from HMRC are rounded to the nearest 5 at super out area level

² BME includes all ethnic groups except for White British, White Irish, Information Not Yet Obtained and Refused. Based on Spring School Census Jan 07

Burton Dassett



Super Output Area	IMD score	Warwickshire Rank*
Burton Dassett	12.11	166

*1=most deprived, 333=least deprived

(OPDM, 2004)

Profile:

100 children aged 0-2
 52 children aged 3-4
 84 children aged 5-7
 87 children aged 8-10
 123 children aged 11-14
 55 children aged 15-17
 (Warks PCT, July 07)

There are 260 families claiming child benefit, and of these 155 are claiming child tax credit.

15 families are claiming out of work benefits, affecting 30 children.

60 children are known to be in lone parent families, around a third of which are in households claiming out of work benefits.
 (HMRC, Aug 05)¹

2.8% of statutory school age pupils that live in this ward and attend Warwickshire maintained schools are from BME communities². Of these, the largest minority ethnic group is Any Other White Background.

Childcare Provision

	Childminder	Creche Day Care	Full Day Care	Out of School Day Care	Sessional Day Care	Grand Total
Providers	3		1	2	1	7
Places	15		36	48	16	115
Vacancies	3		9		12	24
% Vacant	20%		25%	0%	75%	21%

Number of places per 100 under 8's = 48.7

2 settings are currently registered to provide nursery education grant sessions.

¹ All figures from HMRC are rounded to the nearest 5 at super out area level

² BME includes all ethnic groups except for White British, White Irish, Information Not Yet Obtained and Refused. Based on Spring School Census Jan 07

Claverdon



Super Output Area	IMD score	Warwickshire Rank*
Claverdon	6.98	261

*1=most deprived, 333=least deprived

(OPDM, 2004)

Profile:

65 children aged 0-2
 56 children aged 3-4
 79 children aged 5-7
 103 children aged 8-10
 110 children aged 11-14
 89 children aged 15-17
 (Warks PCT, July 07)

There are 265 families claiming child benefit, and of these 100 are claiming child tax credit.

5 families are claiming out of work benefits, affecting 15 children.

35 children are known to be in lone parent families, around 29% of which are in households claiming out of work benefits.
 (HMRC, Aug 05)¹

6.1% of statutory school age pupils that live in this ward and attend Warwickshire maintained schools are from BME communities². Of these, the largest minority ethnic group is White and Asian.

Childcare Provision

	Childminder	Creche Day Care	Full Day Care	Out of School Day Care	Sessional Day Care	Grand Total
Providers	2		2	1	1	6
Places	11		86	45	32	174
Vacancies					0	0
% Vacant	0%		0%	0%	0%	0%

Number of places per 100 under 8's = 87.0

2 settings are currently registered to provide nursery education grant sessions.

Additionally there is an unregistered breakfast club for children aged 4 to 11.

¹ All figures from HMRC are rounded to the nearest 5 at super out area level

² BME includes all ethnic groups except for White British, White Irish, Information Not Yet Obtained and Refused. Based on Spring School Census Jan 07

Ettington



Super Output Area	IMD score	Warwickshire Rank*
Ettington	8.8	231

*1=most deprived, 333=least deprived

(OPDM, 2004)

Profile:

73 children aged 0-2
 68 children aged 3-4
 110 children aged 5-7
 97 children aged 8-10
 126 children aged 11-14
 81 children aged 15-17
 (Warks PCT, July 07)

There are 325 families claiming child benefit, and of these 170 are claiming child tax credit.

25 families are claiming out of work benefits, affecting 45 children.

65 children are known to be in lone parent families, around 31% of which are in households claiming out of work benefits.
 (HMRC, Aug 05)¹

4.8% of statutory school age pupils that live in this ward and attend Warwickshire maintained schools are from BME communities². Of these, the largest minority ethnic groups are Any Other White Background and White and Asian.

Childcare Provision

	Childminder	Creche Day Care	Full Day Care	Out of School Day Care	Sessional Day Care	Grand Total
Providers	4		1			5
Places	21		32			53
Vacancies	2		10			12
% Vacant	10%		31%			23%

Number of places per 100 under 8's = 21.1

1 setting is currently registered to provide nursery education grant sessions.

¹ All figures from HMRC are rounded to the nearest 5 at super out area level

² BME includes all ethnic groups except for White British, White Irish, Information Not Yet Obtained and Refused. Based on Spring School Census Jan 07

Fenny Compton



Super Output Area	IMD score	Warwickshire Rank*
Ladbroke & Priors	11.23	181
Fenny Compton, Farnborough & Avon Dassett	8.2	244

*1=most deprived, 333=least deprived

(OPDM, 2004)

Profile:

87 children aged 0-2
 58 children aged 3-4
 106 children aged 5-7
 128 children aged 8-10
 119 children aged 11-14
 87 children aged 15-17
 (Warks PCT, July 07)

There are 300 families claiming child benefit, and of these 150 are claiming child tax credit.

25 families are claiming out of work benefits, affecting 40 children.

75 children are known to be in lone parent families, around 47% of which are in households claiming out of work benefits.
 (HMRC, Aug 05)¹

3.0% of statutory school age pupils that live in this ward and attend Warwickshire maintained schools are from BME communities². Of these, the largest minority ethnic group is Any Other White Background.

Childcare Provision

	Childminder	Creche Day Care	Full Day Care	Out of School Day Care	Sessional Day Care	Grand Total
Providers	2		2	1		5
Places	10		50	16		76
Vacancies	0		26	4		30
% Vacant	0%		52%	25%		39%

Number of places per 100 under 8's = 30.3

3 settings are currently registered to provide nursery education grant sessions.

Additionally there is an unregistered nursery unit of an independent school and a before and after school club for children aged 4 to 11.

¹ All figures from HMRC are rounded to the nearest 5 at super out area level

² BME includes all ethnic groups except for White British, White Irish, Information Not Yet Obtained and Refused. Based on Spring School Census Jan 07

Harbury



Super Output Area	IMD score	Warwickshire Rank*
Deppers Bridge, Chester & Kings	11.84	168
Bishops Itchington	5.46	289
Harbury	1.69	333

*1=most deprived, 333=least deprived

(OPDM, 2004)

Profile:

136 children aged 0-2
 101 children aged 3-4
 157 children aged 5-7
 202 children aged 8-10
 210 children aged 11-14
 184 children aged 15-17
 (Warks PCT, July 07)

There are 585 families claiming child benefit, and of these 365 are claiming child tax credit.

45 families are claiming out of work benefits, affecting 95 children.

130 children are known to be in lone parent families, around 42% of which are in households claiming out of work benefits.

(HMRC, Aug 05)¹

2.1% of statutory school age pupils that live in this ward and attend Warwickshire maintained schools are from BME communities². There are no large minority ethnic groups in this ward.

Childcare Provision

	Childminder	Creche Day Care	Full Day Care	Out of School Day Care	Sessional Day Care	Grand Total
Providers	5		2	3	1	11
Places	22		35	65	26	148
Vacancies	2		5	21		28
% Vacant	9%		14%	32%	0%	19%

Number of places per 100 under 8's = 37.6

3 settings are currently registered to provide nursery education grant sessions.

¹ All figures from HMRC are rounded to the nearest 5 at super out area level

² BME includes all ethnic groups except for White British, White Irish, Information Not Yet Obtained and Refused. Based on Spring School Census Jan 07

Henley



Super Output Area	IMD score	Warwickshire Rank*
Henley West	3.11	324
Henley East and Beaudesert	9.8	213
Wootton Wawen	10.19	201

*1=most deprived, 333=least deprived

(OPDM, 2004)

Profile:

115 children aged 0-2
 87 children aged 3-4
 115 children aged 5-7
 111 children aged 8-10
 173 children aged 11-14
 137 children aged 15-17
 (Warks PCT, July 07)

There are 415 families claiming child benefit, and of these 240 are claiming child tax credit.

40 families are claiming out of work benefits, affecting 60 children.

125 children are known to be in lone parent families, around 32% of which are in households claiming out of work benefits.

(HMRC, Aug 05)¹

3.3% of statutory school age pupils that live in this ward and attend Warwickshire maintained schools are from BME communities². Of these, the largest minority ethnic group is Any Other White Background.

Childcare Provision

	Childminder	Creche Day Care	Full Day Care	Out of School Day Care	Sessional Day Care	Grand Total
Providers	4		3	2	2	11
Places	19		132	46	84	281
Vacancies	5		13	16		34
% Vacant	26%		10%	35%	0%	12%

Number of places per 100 under 8's = 88.6

4 settings are currently registered to provide nursery education grant sessions.

¹ All figures from HMRC are rounded to the nearest 5 at super out area level

² BME includes all ethnic groups except for White British, White Irish, Information Not Yet Obtained and Refused. Based on Spring School Census Jan 07

Kineton



Super Output Area	IMD score	Warwickshire Rank*
Kineton, Chadshunt & Compton Verney	9.11	225
Kineton Castle, Lt Kineton & Combrook	11.8	169
Lighthorne & Lighthorne Heath	12.37	162

*1=most deprived, 333=least deprived

(OPDM, 2004)

Profile:

141 children aged 0-2
 100 children aged 3-4
 140 children aged 5-7
 156 children aged 8-10
 220 children aged 11-14
 172 children aged 15-17
 (Warks PCT, July 07)

There are 520 families claiming child benefit, and of these 325 are claiming child tax credit.

55 families are claiming out of work benefits, affecting 85 children.

140 children are known to be in lone parent families, around 39% of which are in households claiming out of work benefits.
 (HMRC, Aug 05)¹

4.1% of statutory school age pupils that live in this ward and attend Warwickshire maintained schools are from BME communities². Of these, the largest minority ethnic group is Indian.

Childcare Provision

	Childminder	Creche Day Care	Full Day Care	Out of School Day Care	Sessional Day Care	Grand Total
Providers	9		2	1	1	13
Places	48		83	32	24	187
Vacancies	2		8		8	18
% Vacant	4%		10%	0%	33%	10%

Number of places per 100 under 8's = 49.1

3 settings are currently registered to provide nursery education grant sessions.

There is 1 maintained nursery class.

¹ All figures from HMRC are rounded to the nearest 5 at super out area level

² BME includes all ethnic groups except for White British, White Irish, Information Not Yet Obtained and Refused. Based on Spring School Census Jan 07

Kinwarton



Super Output Area	IMD score	Warwickshire Rank*
Kinwarton	6.77	265

*1=most deprived, 333=least deprived

(OPDM, 2004)

Profile:

46 children aged 0-2
 37 children aged 3-4
 60 children aged 5-7
 64 children aged 8-10
 106 children aged 11-14
 85 children aged 15-17
 (Warks PCT, July 07)

There are 220 families claiming child benefit, and of these 140 are claiming child tax credit.

10 families are claiming out of work benefits, affecting 20 children.

50 children are known to be in lone parent families, around 20% of which are in households claiming out of work benefits.
 (HMRC, Aug 05)¹

3.6% of statutory school age pupils that live in this ward and attend Warwickshire maintained schools are from BME communities². Of these, the largest minority ethnic groups are White and Asian, and Any Other White Background.

Childcare Provision

	Childminder	Creche Day Care	Full Day Care	Out of School Day Care	Sessional Day Care	Grand Total
Providers	2					2
Places	12					12
Vacancies	5					5
% Vacant	42%					42%

Number of places per 100 under 8's = 8.4

0 settings are currently registered to provide nursery education grant sessions.

¹ All figures from HMRC are rounded to the nearest 5 at super out area level

² BME includes all ethnic groups except for White British, White Irish, Information Not Yet Obtained and Refused. Based on Spring School Census Jan 07

Long Compton



Super Output Area	IMD score	Warwickshire Rank*
Long Compton	13.76	142

*1=most deprived, 333=least deprived (OPDM, 2004)

Profile:

69 children aged 0-2
 40 children aged 3-4
 56 children aged 5-7
 60 children aged 8-10
 85 children aged 11-14
 60 children aged 15-17
 (Warks PCT, July 07)

There are 215 families claiming child benefit, and of these 105 are claiming child tax credit.

15 families are claiming out of work benefits, affecting 25 children.

40 children are known to be in lone parent families, around 38% of which are in households claiming out of work benefits.
 (HMRC, Aug 05)¹

4.2% of statutory school age pupils that live in this ward and attend Warwickshire maintained schools are from BME communities². Of these, the largest minority ethnic groups are Any Other White Background, White and Asian, and Any Other Mixed Background.

Childcare Provision

	Childminder	Creche Day Care	Full Day Care	Out of School Day Care	Sessional Day Care	Grand Total
Providers			1			1
Places			20			20
Vacancies			4			4
% Vacant			20%			20%

Number of places per 100 under 8's = 12.1

1 setting is currently registered to provide nursery education grant sessions.

There is 1 maintained nursery class.

Additionally there is an unregistered after school club for children aged 5 to 11.

¹ All figures from HMRC are rounded to the nearest 5 at super out area level

² BME includes all ethnic groups except for White British, White Irish, Information Not Yet Obtained and Refused. Based on Spring School Census Jan 07

Long Itchington



Super Output Area	IMD score	Warwickshire Rank*
Long Itchington West & Ufton	7.57	253
Long Itchington East	9.02	226

*1=most deprived, 333=least deprived

(OPDM, 2004)

Profile:

80 children aged 0-2
 54 children aged 3-4
 73 children aged 5-7
 91 children aged 8-10
 130 children aged 11-14
 98 children aged 15-17
 (Warks PCT, July 07)

There are 260 families claiming child benefit, and of these 150 are claiming child tax credit.

20 families are claiming out of work benefits, affecting 40 children.

75 children are known to be in lone parent families, around 40% of which are in households claiming out of work benefits.
 (HMRC, Aug 05)¹

2.7% of statutory school age pupils that live in this ward and attend Warwickshire maintained schools are from BME communities². Of these, the largest minority ethnic group is Any Other White Background.

Childcare Provision

	Childminder	Creche Day Care	Full Day Care	Out of School Day Care	Sessional Day Care	Grand Total
Providers	1		3	1		5
Places	4		116	32		152
Vacancies			21			21
% Vacant	0%		18%	0%		14%

Number of places per 100 under 8's = 73.4

2 settings are currently registered to provide nursery education grant sessions.

¹ All figures from HMRC are rounded to the nearest 5 at super out area level

² BME includes all ethnic groups except for White British, White Irish, Information Not Yet Obtained and Refused. Based on Spring School Census Jan 07

Quinton



Super Output Area	IMD score	Warwickshire Rank*
Quinton	11.02	185

*1=most deprived, 333=least deprived

(OPDM, 2004)

Profile:

115 children aged 0-2
 58 children aged 3-4
 98 children aged 5-7
 114 children aged 8-10
 140 children aged 11-14
 91 children aged 15-17
 (Warks PCT, July 07)

There are 335 families claiming child benefit, and of these 240 are claiming child tax credit.

35 families are claiming out of work benefits, affecting 65 children.

95 children are known to be in lone parent families, around 47% of which are in households claiming out of work benefits.
 (HMRC, Aug 05)¹

2.8% of statutory school age pupils that live in this ward and attend Warwickshire maintained schools are from BME communities². Of these, the largest minority ethnic group is White and Asian.

Childcare Provision

	Childminder	Creche Day Care	Full Day Care	Out of School Day Care	Sessional Day Care	Grand Total
Providers	3			2	1	6
Places	13			80	20	113
Vacancies	2			32	8	42
% Vacant	15%			40%	40%	37%

Number of places per 100 under 8's = 41.7

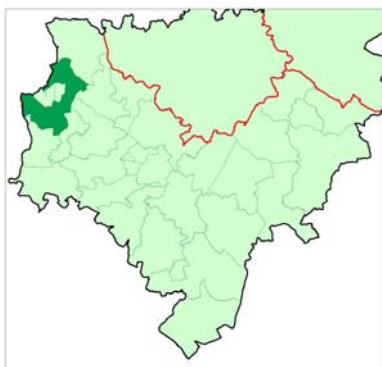
1 setting is currently registered to provide nursery education grant sessions.

There is 1 maintained nursery class.

¹ All figures from HMRC are rounded to the nearest 5 at super out area level

² BME includes all ethnic groups except for White British, White Irish, Information Not Yet Obtained and Refused. Based on Spring School Census Jan 07

Sambourne



Super Output Area	IMD score	Warwickshire Rank*
Sambourne	11.35	179

*1=most deprived, 333=least deprived

(OPDM, 2004)

Profile:

46 children aged 0-2
 29 children aged 3-4
 62 children aged 5-7
 80 children aged 8-10
 84 children aged 11-14
 66 children aged 15-17
 (Warks PCT, July 07)

There are 205 families claiming child benefit, and of these 120 are claiming child tax credit.

20 families are claiming out of work benefits, affecting 35 children.

65 children are known to be in lone parent families, around 38% of which are in households claiming out of work benefits.
 (HMRC, Aug 05)¹

4.6% of statutory school age pupils that live in this ward and attend Warwickshire maintained schools are from BME communities². Of these, the largest minority ethnic groups are White and Black Caribbean, and Any Other White Background.

Childcare Provision

	Childminder	Creche Day Care	Full Day Care	Out of School Day Care	Sessional Day Care	Grand Total
Providers	2		1	2		5
Places	9		76	52		137
Vacancies	1		15	8		24
% Vacant	11%		20%	15%		18%

Number of places per 100 under 8's = 100.0

1 setting is currently registered to provide nursery education grant sessions.

¹ All figures from HMRC are rounded to the nearest 5 at super out area level

² BME includes all ethnic groups except for White British, White Irish, Information Not Yet Obtained and Refused. Based on Spring School Census Jan 07

Shipston



Super Output Area	IMD score	Warwickshire Rank*
Shipston South & Furze Hill	2.87	326
Shipston North	8.46	237
Shipston West and Town Centre	9.59	215

*1=most deprived, 333=least deprived

(OPDM, 2004)

Profile:

173 children aged 0-2
 102 children aged 3-4
 161 children aged 5-7
 137 children aged 8-10
 222 children aged 11-14
 171 children aged 15-17
 (Warks PCT, July 07)

There are 555 families claiming child benefit, and of these 400 are claiming child tax credit.

75 families are claiming out of work benefits, affecting 130 children.

170 children are known to be in lone parent families, around 47% of which are in households claiming out of work benefits.

(HMRC, Aug 05)¹

5.2% of statutory school age pupils that live in this ward and attend Warwickshire maintained schools are from BME communities². Of these, the largest minority ethnic groups are Any Other Mixed Background and Any Other White Background.

Childcare Provision

	Childminder	Creche Day Care	Full Day Care	Out of School Day Care	Sessional Day Care	Grand Total
Providers	9		2	2		13
Places	42		87	72		201
Vacancies	3		19			22
% Vacant	7%		22%	0%		11%

Number of places per 100 under 8's = 46.1

3 settings are currently registered to provide nursery education grant sessions.

¹ All figures from HMRC are rounded to the nearest 5 at super out area level

² BME includes all ethnic groups except for White British, White Irish, Information Not Yet Obtained and Refused. Based on Spring School Census Jan 07

Snitterfield



Super Output Area	IMD score	Warwickshire Rank*
Snitterfield & Wolverton	5.92	279
Hampton Lucy & Fulbrook	9.15	223

*1=most deprived, 333=least deprived

(OPDM, 2004)

Profile:

60 children aged 0-2
 52 children aged 3-4
 77 children aged 5-7
 90 children aged 8-10
 116 children aged 11-14
 74 children aged 15-17
 (Warks PCT, July 07)

There are 275 families claiming child benefit, and of these 135 are claiming child tax credit.

15 families are claiming out of work benefits, affecting 20 children.

60 children are known to be in lone parent families, around 25% of which are in households claiming out of work benefits.
 (HMRC, Aug 05)¹

3.9% of statutory school age pupils that live in this ward and attend Warwickshire maintained schools are from BME communities². Of these, the largest minority ethnic groups are Any Other White Background and Any Other Mixed Background.

Childcare Provision

	Childminder	Creche Day Care	Full Day Care	Out of School Day Care	Sessional Day Care	Grand Total
Providers	3		2		1	6
Places	13		67		8	88
Vacancies	0		8			8
% Vacant	0%		12%		0%	9%

Number of places per 100 under 8's = 46.6

3 settings are currently registered to provide nursery education grant sessions.

Additionally there is an unregistered after school club for children aged 4 to 11.

¹ All figures from HMRC are rounded to the nearest 5 at super out area level

² BME includes all ethnic groups except for White British, White Irish, Information Not Yet Obtained and Refused. Based on Spring School Census Jan 07

Southam



Super Output Area	IMD score	Warwickshire Rank*
Southam East	4.55	308
Southam North	5.88	281
Southam West	12.45	160
Southam South & Town Centre	4.79	306

*1=most deprived, 333=least deprived (OPDM, 2004)

Profile:

197 children aged 0-2
 178 children aged 3-4
 254 children aged 5-7
 260 children aged 8-10
 385 children aged 11-14
 272 children aged 15-17
 (Warks PCT, July 07)

There are 870 families claiming child benefit, and of these 655 are claiming child tax credit.

80 families are claiming out of work benefits, affecting 160 children.

300 children are known to be in lone parent families, around 40% of which are in households claiming out of work benefits.
 (HMRC, Aug 05)¹

4.4% of statutory school age pupils that live in this ward and attend Warwickshire maintained schools are from BME communities². Of these, the largest minority ethnic group is Any Other White Background.

Childcare Provision

	Childminder	Creche Day Care	Full Day Care	Out of School Day Care	Sessional Day Care	Grand Total
Providers	10		4	6	1	21
Places	49		180	134	14	377
Vacancies	8		66		17	91
% Vacant	16%		37%	0%	121%	24%

Number of places per 100 under 8's = ...=59.9

5 settings are currently registered to provide nursery education grant sessions.

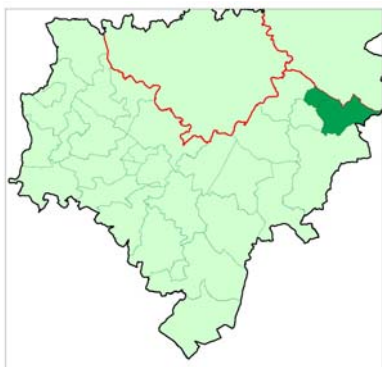
There is 1 maintained nursery class.

Additionally there is an unregistered holiday activity for children aged 4 to 11, and a leisure centre with a holiday activity programme for children of all ages.

¹ All figures from HMRC are rounded to the nearest 5 at super out area level

² BME includes all ethnic groups except for White British, White Irish, Information Not Yet Obtained and Refused. Based on Spring School Census Jan 07

Stockton and Napton



Super Output Area	IMD score	Warwickshire Rank*
Stockton	5.93	278
Napton on the Hill	8.28	243

*1=most deprived, 333=least deprived

(OPDM, 2004)

Profile:

101 children aged 0-2
 64 children aged 3-4
 96 children aged 5-7
 107 children aged 8-10
 161 children aged 11-14
 100 children aged 15-17
 (Warks PCT, July 07)

There are 330 families claiming child benefit, and of these 215 are claiming child tax credit.

25 families are claiming out of work benefits, affecting 35 children.

80 children are known to be in lone parent families, around 31% of which are in households claiming out of work benefits.
 (HMRC, Aug 05)¹

2.5% of statutory school age pupils that live in this ward and attend Warwickshire maintained schools are from BME communities². Of these, the largest minority ethnic group is Any Other White Background.

Childcare Provision

	Childminder	Creche Day Care	Full Day Care	Out of School Day Care	Sessional Day Care	Grand Total
Providers	1		1	1	1	4
Places	4		16	24	24	68
Vacancies	2		7		13	22
% Vacant	50%		44%	0%	54%	32%

Number of places per 100 under 8's = 26.1

2 settings are currently registered to provide nursery education grant sessions.

¹ All figures from HMRC are rounded to the nearest 5 at super out area level

² BME includes all ethnic groups except for White British, White Irish, Information Not Yet Obtained and Refused. Based on Spring School Census Jan 07

Stratford Alveston



Super Output Area	IMD score	Warwickshire Rank*
Bridgetown	5.67	287
Stratford South East & Alveston Hill	3.98	317
Tiddington & Alveston	8.17	245

*1=most deprived, 333=least deprived

(OPDM, 2004)

Profile:

257 children aged 0-2
 175 children aged 3-4
 233 children aged 5-7
 247 children aged 8-10
 321 children aged 11-14
 231 children aged 15-17
 (Warks PCT, July 07)

There are 660 families claiming child benefit, and of these 335 are claiming child tax credit.

40 families are claiming out of work benefits, affecting 70 children.

155 children are known to be in lone parent families, around 19% of which are in households claiming out of work benefits.

(HMRC, Aug 05)¹

10.2% of statutory school age pupils that live in this ward and attend Warwickshire maintained schools are from BME communities². Of these, the largest minority ethnic groups are Any Other White Background and Indian.

Childcare Provision

	Childminder	Creche Day Care	Full Day Care	Out of School Day Care	Sessional Day Care	Grand Total
Providers	13		3	5	2	23
Places	56		227	196	48	527
Vacancies	13		12		5	30
% Vacant	23%		5%	0%	10%	6%

Number of places per 100 under 8's = 79.2

6 settings are currently registered to provide nursery education grant sessions.

Additionally there is an unregistered nursery unit of an independent school.

¹ All figures from HMRC are rounded to the nearest 5 at super out area level

² BME includes all ethnic groups except for White British, White Irish, Information Not Yet Obtained and Refused. Based on Spring School Census Jan 07

Stratford Avenue and New Town



Super Output Area	IMD score	Warwickshire Rank*
Clopton & Welcombe Hills	2.0	332
Town Centre North	10.81	192
The Avenue	9.87	211
Maybird	20.36	77

*1=most deprived, 333=least deprived

(OPDM, 2004)

Profile:

188 children aged 0-2
 148 children aged 3-4
 206 children aged 5-7
 206 children aged 8-10
 276 children aged 11-14
 233 children aged 15-17
 (Warks PCT, July 07)

There are 655 families claiming child benefit, and of these 470 are claiming child tax credit.

95 families are claiming out of work benefits, affecting 175 children.

245 children are known to be in lone parent families, around 45% of which are in households claiming out of work benefits.
 (HMRC, Aug 05)¹

10.3% of statutory school age pupils that live in this ward and attend Warwickshire maintained schools are from BME communities². Of these, the largest minority ethnic group is Any Other White Background.

Childcare Provision

	Childminder	Creche Day Care	Full Day Care	Out of School Day Care	Sessional Day Care	Grand Total
Providers	3	1	4	4	1	13
Places	10	30	157	102	20	319
Vacancies	0	10	5	10	2	27
% Vacant	0%	33%	3%	10%	10%	8%

Number of places per 100 under 8's = 58.9

6 settings are currently registered to provide nursery education grant sessions.

There is 1 maintained assessment nursery.

¹ All figures from HMRC are rounded to the nearest 5 at super out area level

² BME includes all ethnic groups except for White British, White Irish, Information Not Yet Obtained and Refused. Based on Spring School Census Jan 07

Stratford Guild and Hathaway



Super Output Area	IMD score	Warwickshire Rank*
Shottery South & Racecourse	2.71	328
Shottery North & Racecourse	8.31	242
Old Town & Town Centre South	11.01	187
Old Town	5.78	284

*1=most deprived, 333=least deprived

(OPDM, 2004)

Profile:

223 children aged 0-2
 123 children aged 3-4
 178 children aged 5-7
 172 children aged 8-10
 257 children aged 11-14
 233 children aged 15-17
 (Warks PCT, July 07)

There are 660 families claiming child benefit, and of these 405 are claiming child tax credit.

55 families are claiming out of work benefits, affecting 100 children.

210 children are known to be in lone parent families, around a third of which are in households claiming out of work benefits.

(HMRC, Aug 05)¹

9.7% of statutory school age pupils that live in this ward and attend Warwickshire maintained schools are from BME communities². Of these, the largest minority ethnic groups are Any Other White Background, White and Asian and Any Other Mixed Background.

Childcare Provision

	Childminder	Creche Day Care	Full Day Care	Out of School Day Care	Sessional Day Care	Grand Total
Providers	8		4	3		15
Places	42		156	54		252
Vacancies	0		30	20		50
% Vacant	0%		19%	37%		20%

Number of places per 100 under 8's = 48.1

4 settings are currently registered to provide nursery education grant sessions.

¹ All figures from HMRC are rounded to the nearest 5 at super out area level

² BME includes all ethnic groups except for White British, White Irish, Information Not Yet Obtained and Refused. Based on Spring School Census Jan 07

Stratford Mount Pleasant



Super Output Area	IMD score	Warwickshire Rank*
Bishopton	6.84	264
Stratford Mount Pleasant West	6.11	275
Stratford Mount Pleasant East	15.76	119

*1=most deprived, 333=least deprived

(OPDM, 2004)

Profile:

122 children aged 0-2
 87 children aged 3-4
 124 children aged 5-7
 148 children aged 8-10
 211 children aged 11-14
 175 children aged 15-17
 (Warks PCT, July 07)

There are 500 families claiming child benefit, and of these 380 are claiming child tax credit.

65 families are claiming out of work benefits, affecting 115 children.

185 children are known to be in lone parent families, around 51% of which are in households claiming out of work benefits.

(HMRC, Aug 05)¹

6.9% of statutory school age pupils that live in this ward and attend Warwickshire maintained schools are from BME communities². Of these, the largest minority ethnic group is Any Other White Background.

Childcare Provision

	Childminder	Creche Day Care	Full Day Care	Out of School Day Care	Sessional Day Care	Grand Total
Providers	12		3	2		17
Places	52		171	80		303
Vacancies	4		0			4
% Vacant	8%		0%	0%		1%

Number of places per 100 under 8's = 91.0

2 settings are currently registered to provide nursery education grant sessions.

¹ All figures from HMRC are rounded to the nearest 5 at super out area level

² BME includes all ethnic groups except for White British, White Irish, Information Not Yet Obtained and Refused. Based on Spring School Census Jan 07

Studley



Super Output Area	IMD score	Warwickshire Rank*
Studley East & Priory	6.16	273
Studley North	12.51	156
Studley West & Common	8.71	233
Studley South	12.67	155

*1=most deprived, 333=least deprived

(OPDM, 2004)

Profile:

172 children aged 0-2
 110 children aged 3-4
 216 children aged 5-7
 231 children aged 8-10
 315 children aged 11-14
 224 children aged 15-17
 (Warks PCT, July 07)

There are 715 families claiming child benefit, and of these 575 are claiming child tax credit.

95 families are claiming out of work benefits, affecting 165 children.

280 children are known to be in lone parent families, around 43% of which are in households claiming out of work benefits.
 (HMRC, Aug 05)¹

7.1% of statutory school age pupils that live in this ward and attend Warwickshire maintained schools are from BME communities². Of these, the largest minority ethnic groups are Any Other White Background, and White and Black Caribbean.

Childcare Provision

	Childminder	Creche Day Care	Full Day Care	Out of School Day Care	Sessional Day Care	Grand Total
Providers	9		2	4		15
Places	38		59	130		227
Vacancies	2		11			13
% Vacant	5%		19%	0%		6%

Number of places per 100 under 8's = 45.6

1 setting is currently registered to provide nursery education grant sessions.

There is 1 maintained nursery class.

¹ All figures from HMRC are rounded to the nearest 5 at super out area level

² BME includes all ethnic groups except for White British, White Irish, Information Not Yet Obtained and Refused. Based on Spring School Census Jan 07

Tanworth



Super Output Area	IMD score	Warwickshire Rank*
Earlswood	9.0	227
Tanworth	11.99	167

*1=most deprived, 333=least deprived

(OPDM, 2004)

Profile:

97 children aged 0-2
 53 children aged 3-4
 111 children aged 5-7
 135 children aged 8-10
 207 children aged 11-14
 149 children aged 15-17
 (Warks PCT, July 07)

There are 415 families claiming child benefit, and of these 160 are claiming child tax credit.

15 families are claiming out of work benefits, affecting 35 children.

55 children are known to be in lone parent families, around 36% of which are in households claiming out of work benefits.
 (HMRC, Aug 05)¹

3.9% of statutory school age pupils that live in this ward and attend Warwickshire maintained schools are from BME communities². Of these, the largest minority ethnic group is Any Other White Background.

Childcare Provision

	Childminder	Creche Day Care	Full Day Care	Out of School Day Care	Sessional Day Care	Grand Total
Providers	1		3	2	1	7
Places	4		111	68	12	195
Vacancies			16			16
% Vacant	0%		14%	0%	0%	8%

Number of places per 100 under 8's = 74.7

3 settings are currently registered to provide nursery education grant sessions.

¹ All figures from HMRC are rounded to the nearest 5 at super out area level

² BME includes all ethnic groups except for White British, White Irish, Information Not Yet Obtained and Refused. Based on Spring School Census Jan 07

Tredington



Super Output Area	IMD score	Warwickshire Rank*
Tredington & Blackwell	7.14	259
Newbold-on-Stour, Ilmington East & Whitchurch	8.81	230

*1=most deprived, 333=least deprived

(OPDM, 2004)

Profile:

58 children aged 0-2
 33 children aged 3-4
 72 children aged 5-7
 75 children aged 8-10
 117 children aged 11-14
 97 children aged 15-17
 (Warks PCT, July 07)

There are 275 families claiming child benefit, and of these 150 are claiming child tax credit.

15 families are claiming out of work benefits, affecting 30 children.

65 children are known to be in lone parent families, around 31% of which are in households claiming out of work benefits.
 (HMRC, Aug 05)¹

1.5% of statutory school age pupils that live in this ward and attend Warwickshire maintained schools are from BME communities². There are no large minority ethnic groups in this ward.

Childcare Provision

	Childminder	Creche Day Care	Full Day Care	Out of School Day Care	Sessional Day Care	Grand Total
Providers	6				1	7
Places	29				12	41
Vacancies	1				4	5
% Vacant	3%				33%	12%

Number of places per 100 under 8's = 25.2

1 setting is currently registered to provide nursery education grant sessions.

¹ All figures from HMRC are rounded to the nearest 5 at super out area level

² BME includes all ethnic groups except for White British, White Irish, Information Not Yet Obtained and Refused. Based on Spring School Census Jan 07

Vale of the Red Horse



Super Output Area	IMD score	Warwickshire Rank*
Vale of the Red Horse	7.54	254

*1=most deprived, 333=least deprived

(OPDM, 2004)

Profile:

52 children aged 0-2
 38 children aged 3-4
 83 children aged 5-7
 85 children aged 8-10
 130 children aged 11-14
 105 children aged 15-17
 (Warks PCT, July 07)

There are 265 families claiming child benefit, and of these 135 are claiming child tax credit.

15 families are claiming out of work benefits, affecting 20 children.

55 children are known to be in lone parent families, around 27% of which are in households claiming out of work benefits.
 (HMRC, Aug 05)¹

5.2% of statutory school age pupils that live in this ward and attend Warwickshire maintained schools are from BME communities². Of these, the largest minority ethnic groups are Any Other White Background and White and Black Caribbean.

Childcare Provision

	Childminder	Creche Day Care	Full Day Care	Out of School Day Care	Sessional Day Care	Grand Total
Providers	1		2	2		5
Places	6		56	60		122
Vacancies			23			23
% Vacant	0%		41%	0%		19%

Number of places per 100 under 8's = 70.5

2 settings are currently registered to provide nursery education grant sessions.

¹ All figures from HMRC are rounded to the nearest 5 at super out area level

² BME includes all ethnic groups except for White British, White Irish, Information Not Yet Obtained and Refused. Based on Spring School Census Jan 07

Welford



Super Output Area	IMD score	Warwickshire Rank*
Welford	8.99	228

*1=most deprived, 333=least deprived

(OPDM, 2004)

Profile:

45 children aged 0-2
 36 children aged 3-4
 68 children aged 5-7
 91 children aged 8-10
 130 children aged 11-14
 91 children aged 15-17
 (Warks PCT, July 07)

There are 230 families claiming child benefit, and of these 105 are claiming child tax credit.

15 families are claiming out of work benefits, affecting 25 children.

35 children are known to be in lone parent families, around 43% of which are in households claiming out of work benefits.
 (HMRC, Aug 05)¹

3.3% of statutory school age pupils that live in this ward and attend Warwickshire maintained schools are from BME communities². Of these, the largest minority ethnic group is White and Black Caribbean.

Childcare Provision

	Childminder	Creche Day Care	Full Day Care	Out of School Day Care	Sessional Day Care	Grand Total
Providers	1			2	1	4
Places	4			32	24	60
Vacancies					0	0
% Vacant	0%			0%	0%	0%

Number of places per 100 under 8's = 40.3

1 setting is currently registered to provide nursery education grant sessions.

There is 1 maintained nursery school.

¹ All figures from HMRC are rounded to the nearest 5 at super out area level

² BME includes all ethnic groups except for White British, White Irish, Information Not Yet Obtained and Refused. Based on Spring School Census Jan 07

Wellesbourne



Super Output Area	IMD score	Warwickshire Rank*
Wellesbourne West	11.71	170
Wellesbourne East, Walton & Airfield	4.62	307
Wellesbourne South	5.96	277
Moreton Morrell, Ashorne & Newbold Pacey	6.94	263
Wellesbourne North	8.43	238

*1=most deprived, 333=least deprived

(OPDM, 2004)

Profile:

186 children aged 0-2
 136 children aged 3-4
 242 children aged 5-7
 217 children aged 8-10
 298 children aged 11-14
 294 children aged 15-17
 (Warks PCT, July 07)

There are 790 families claiming child benefit, and of these 510 are claiming child tax credit.

70 families are claiming out of work benefits, affecting 115 children.

205 children are known to be in lone parent families, around 39% of which are in households claiming out of work benefits.
 (HMRC, Aug 05)¹

3.6% of statutory school age pupils that live in this ward and attend Warwickshire maintained schools are from BME communities². There are no large minority ethnic groups in this ward.

Childcare Provision

	Childminder	Creche Day Care	Full Day Care	Out of School Day Care	Sessional Day Care	Grand Total
Providers	20		1	2	2	25
Places	94		36	90	58	278
Vacancies	16			10	16	42
% Vacant	17%		0%	11%	28%	15%

Number of places per 100 under 8's = 49.3

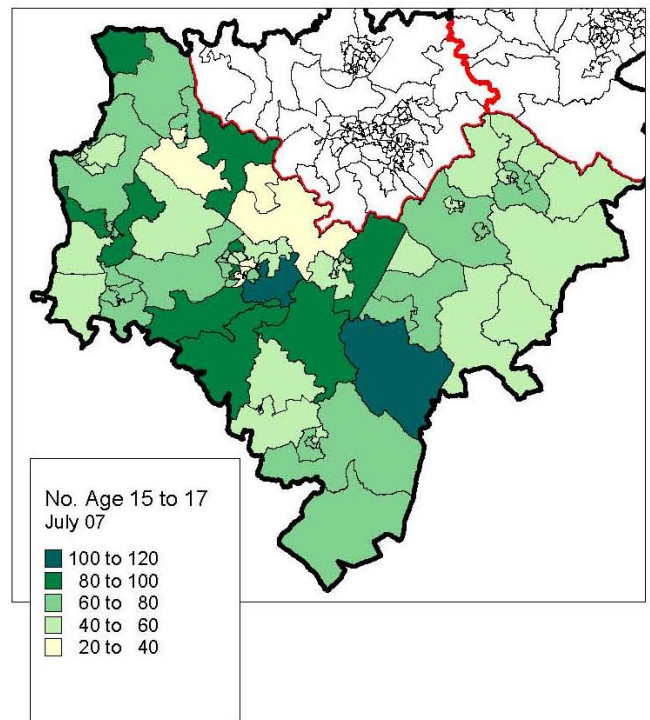
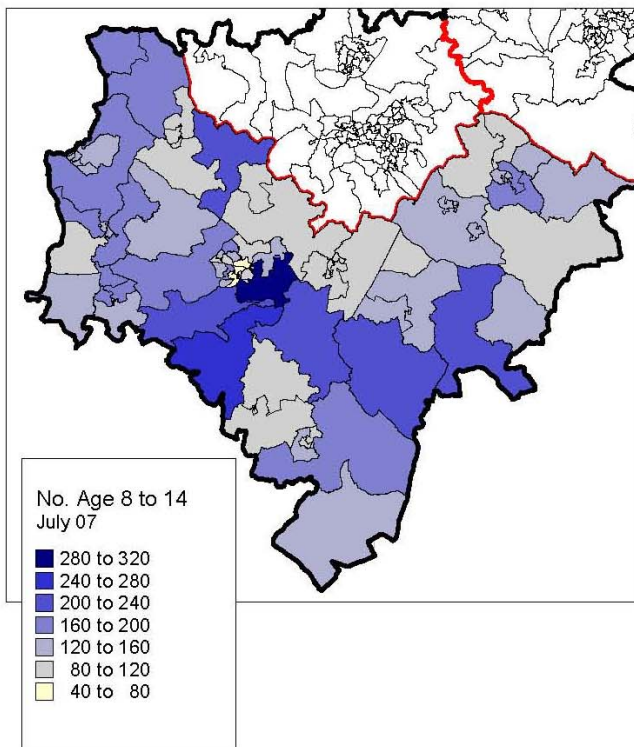
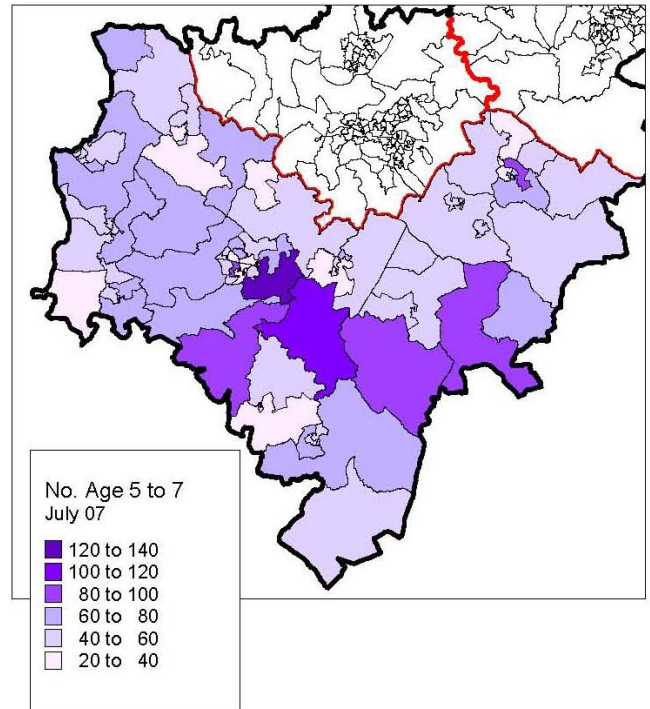
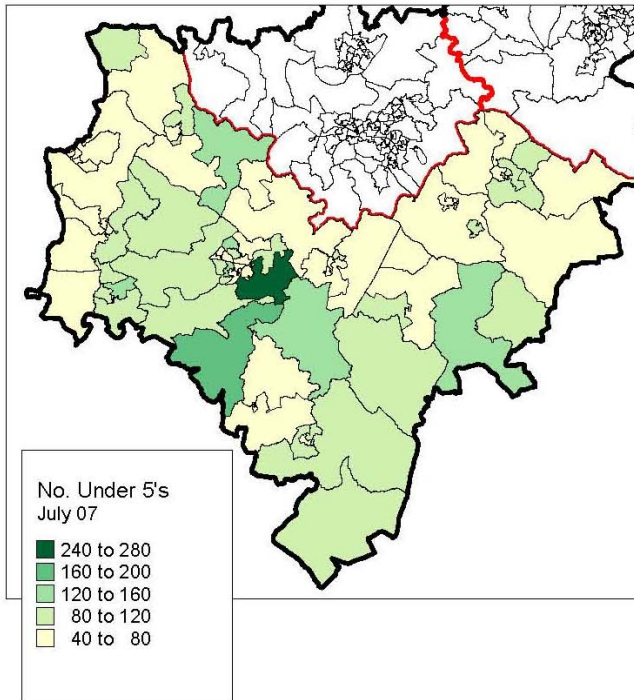
3 settings are currently registered to provide nursery education grant sessions.

There is 1 maintained nursery class.

¹ All figures from HMRC are rounded to the nearest 5 at super out area level

² BME includes all ethnic groups except for White British, White Irish, Information Not Yet Obtained and Refused. Based on Spring School Census Jan 07

Appendix A: Maps showing the distribution of children by age group

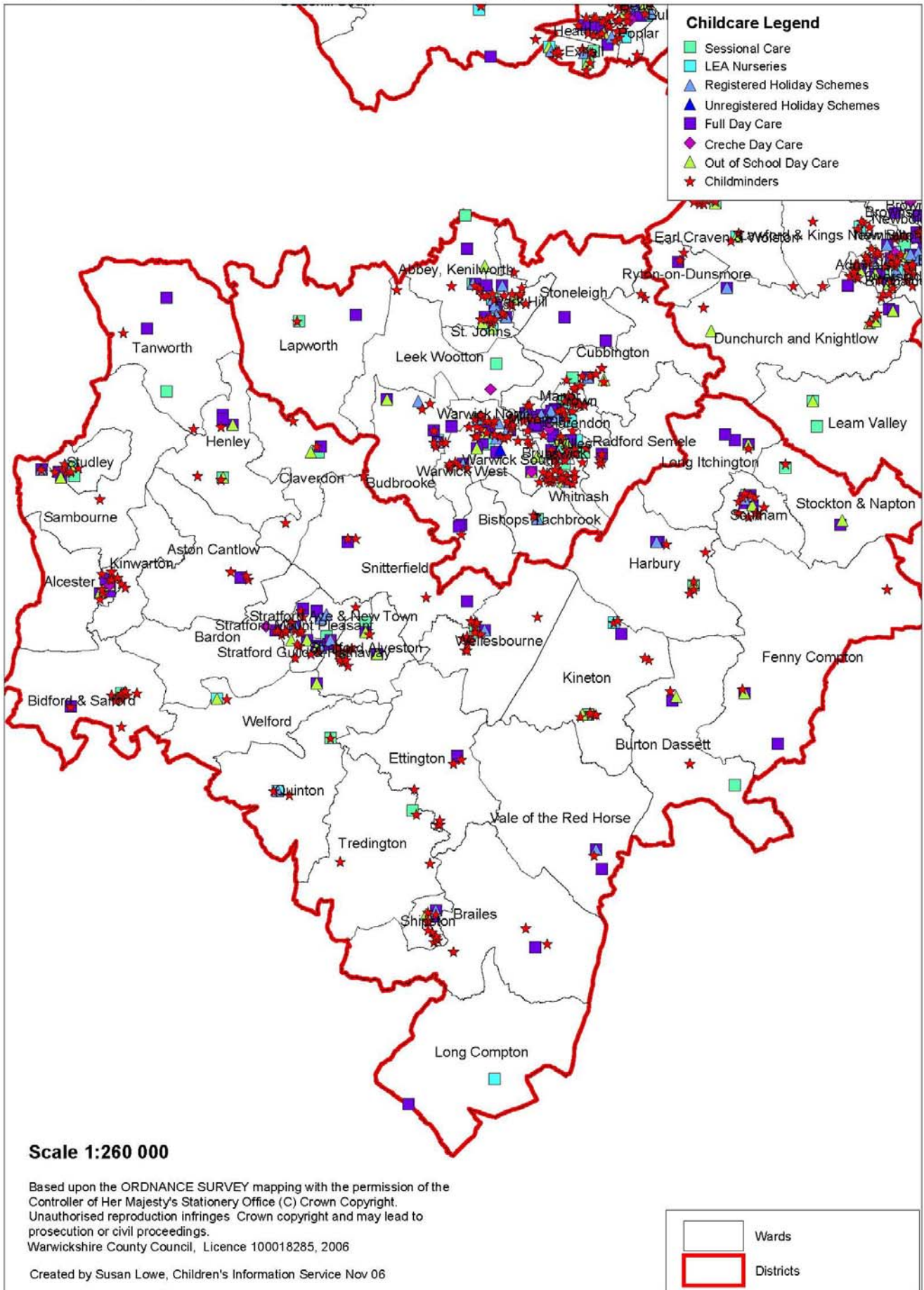


Based on Ordnance Survey mapping with the permission of the Controller of Her Majesty's Stationery Office © Crown Copyright. Unauthorised reproduction infringes Crown copyright and may lead to prosecution or civil proceedings. Warwickshire County Council, Licence 100018285, 2007

Appendix B: Location of childcare by type

Childcare by District November 2006

Stratford District



Appendix C: Parent's survey responses on use of and access to childcare

No. of respondents	How many children do you have in each age group?					
	0-2 years	3-4 years	5-7 years	8-14 years	15-17 years	Total
	106	58	68	65	10	307

Are any of the children registered as disabled or statemented?

Disabled 0-2	Disabled 3-4	Disabled 5-7	Disabled 8-14	Disabled 15-17
5	0	0	3	0
Statemented 0-2	Statemented 3-4	Statemented 5-7	Statemented 8-14	Statemented 15-17
3	0	0	3	2

Which category best describes their disability

Communication and social interaction	Learning difficulties in all areas	Behaviour, emotional or social development	Sensory and/or physical	Other (please specify)
6	8	5	4	3

Tick all the ways in which care has been provided for each child in the last 12 months

Childminder	Pre-school	Relative in your home	Before/After school club	Holiday Club	Day nursery	Nanny	In relatives home	Have not used any childcare	Other (please specify)
36	52	68	35	16	51	3	71	42	31
17%	24%	31%	16%	7%	24%	1%	33%	19%	14%

Tick all the reasons why you have used childcare in the last 12 months

Regular Use	Sick care	School holidays	Emergency care	Night or weekend care	Other (please specify)
125	16	27	18	27	29
58%	7%	13%	8%	13%	13%

In the last year have you experienced any difficulties in finding childcare? If yes, please tick all that apply

Lack of availability	No vacancies for my child's age group	No vacancies for the type of childcare I am looking for	Care not adequate for my child's needs	Lack of information about childcare	Hours did not suit my needs	The cost of care was too high	Difficult to get to	Have not experienced any difficulties	Other (please specify)
25	15	9	9	9	16	33	4	70	28
12%	7%	4%	4%	4%	7%	15%	2%	32%	13%

Appendix D: Average costs of childcare – Stratford District Aug 07

Stratford -upon-Avon								
Childminders								
Costs per hour			Costs per day			Costs per week		
Highest	Lowest	Average	Highest	Lowest	Average	Highest	Lowest	Average
3.50	2.50	3.41	45.00	30.00	34.38	175.00	150.00	161.67
Day Nurseries								
Costs per session			Costs per day			Costs per week		
Highest	Lowest	Average	Highest	Lowest	Average	Highest	Lowest	Average
21.00	11.50	17.45	44.00	22.00	35.10	188.80	107.50	160.80
Out of School Clubs								
Average costs for full use of before and after school care (per day)								
			9.65					

Southam								
Childminders								
Costs per hour			Costs per day			Costs per week		
Highest	Lowest	Average	Highest	Lowest	Average	Highest	Lowest	Average
4.50	2.50	3.22	35.00	30.00	31.08	157.50	140.00	149.50
Day Nurseries								
Costs per session			Costs per day			Costs per week		
Highest	Lowest	Average	Highest	Lowest	Average	Highest	Lowest	Average
23.50	5.65	18.28	37.50	30.00	33.40	175.00	142.00	158.30
Out of School Clubs								
Average costs for full use of before and after school care (per day)								
			10.39					

Alcester								
Childminders								
Costs per hour (£)			Costs per day			Costs per week		
Highest	Lowest	Average	Highest	Lowest	Average	Highest	Lowest	Average
4.00	1.50	3.23	40.00	12.00	26.93	200.00	60.00	151.09
Day Nurseries								
Costs per session			Costs per day			Costs per week		
Highest	Lowest	Average	Highest	Lowest	Average	Highest	Lowest	Average
9.40	8.40	8.90	29.00	28.00	28.50	N/A	N/A	N/A
Out of School Clubs								
Average costs for full use of before and after school care (per day)								
			9.32					

Wellesbourne								
Childminders								
Costs per hour			Costs per day			Costs per week		
Highest	Lowest	Average	Highest	Lowest	Average	Highest	Lowest	Average
3.75	3.00	3.38	35.00	35.00	35.00	N/A	N/A	N/A
Day Nurseries								
Costs per session			Costs per day			Costs per week		
Highest	Lowest	Average	Highest	Lowest	Average	Highest	Lowest	Average
15.65	15.65	15.65	31.30	31.30	31.30	N/A	N/A	N/A
Out of School Clubs								
Average costs for full use of before and after school care (per day)								
			9.65					

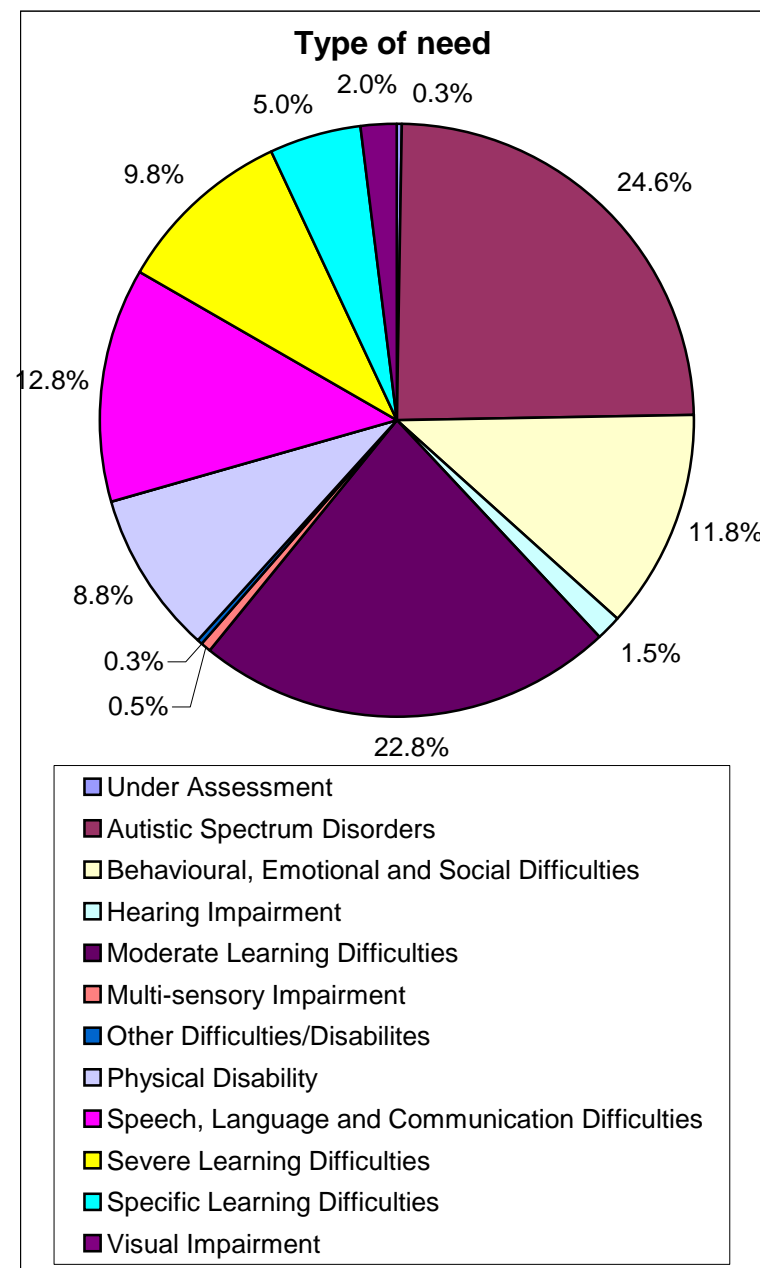
Appendix E: Breakdown of children with a statement of special educational needs by type of need

Description	Number	Percentage
Under Assessment	1	0.3%
Autistic Spectrum Disorders	98	24.6%
Behavioural, Emotional and Social Difficulties	47	11.8%
Hearing Impairment	6	1.5%
Moderate Learning Difficulties	91	22.8%
Multi-sensory Impairment	2	0.5%
Other Difficulties/Disabilites	1	0.3%
Physical Disability	35	8.8%
Profound and Multiple Learning Difficulties	0	0.0%
Speech, Language and Communication Difficulties	51	12.8%
Severe Learning Difficulties	39	9.8%
Specific Learning Difficulties	20	5.0%
Visual Impairment	8	2.0%
Total	399	100%

Male	300	75%
Female	99	25%
	399	100%

Total aged 5-17*	18,236
% of population	2.2%

* Population figures from Warks PCT, July 07



Appendix F: Glossary of abbreviations

The following list details abbreviations either used in this document or commonly used by others in referring to the relevant topic:

ASRS - Assessment, Statementing and Review Service

BME communities – Black, Minority and Ethnic communities. In this document BME communities include Bangladeshi, Black African, Black Caribbean, Chinese, Gypsy/Roma, Indian, Pakistani, Traveller of Irish Heritage, White and Asian, White and Black African, White and Black Caribbean, Any Other Asian Background, Any Other Black Background, Any Other Mixed Background, Any Other White Background, and Any Other Ethnic Group

CTC – Child Tax Credit

FIS – Family Information Service (formerly Children’s Information Service)

HMRC – Her Majesty’s Revenue and Customs

IMD – Index of Multiple Deprivation. The IMD 2004 contains seven Domains of deprivation. These are: Income deprivation, Employment deprivation, Health deprivation and disability, Education, skills and training deprivation, Barriers to Housing and Services, Living environment deprivation and Crime

JCP – Job Centre Plus

NEG – Nursery Education Grant

ODPM – Office of the Deputy Prime Minister

Ofsted – Office for Standards in Education

SEN – Special Educational Needs

Warks PCT – Warwickshire Primary Care Trust

WTC – Working Tax Credit

If you find this document difficult to understand, we can provide it in another format, for example in Braille, in large print, on audiotape, in another language or by talking to you. Please contact us on 0845 0908044.